

# Maxload Pro ADO v4.x Network Install Instructions

## Important Notes

Before beginning, PLEASE READ the following:

- **If you are upgrading from a previous version of the software, please refer to the Database Migration document for details before performing this install.**
- Confirm you have **sufficient rights** (Read/Write/Execute) to install the software to the network location that has been allocated for the application. If you are unsure if you have sufficient rights, please contact your IT department.
- Please start the installation from a client machine that will be using the software as you will have the option to point it to the network location during this process. (Discussed in more detail later in this document.)
- **If you are unsure what kind of license you have, please call (972)739-8677 with your serial number marked on the front of the media and/or present on the literature sent.**
- You MUST contact TOPS via phone or email to complete the license setup. If you are installing a Demo, you can contact TOPS via phone or email for a temporary Demo activation code.

## A. Begin Installation

1. Please close all applications.
2. Insert CD and run **MaxPro\_Setup\_ADO.exe**. If you were sent a link to install the software, please extract those files and run the .exe from the unzipped directory.
3. An install wizard will appear with the **Maxload Pro Setup Welcome** screen. Continue by clicking on the **Next** button.

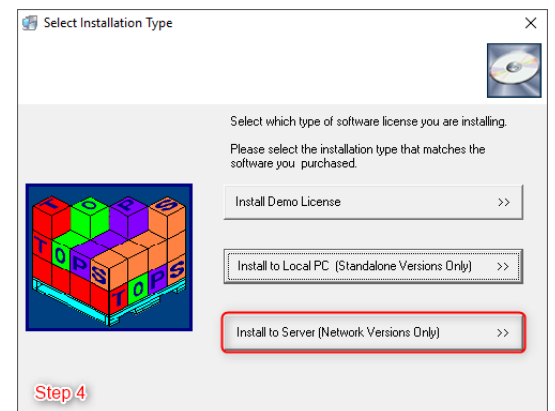
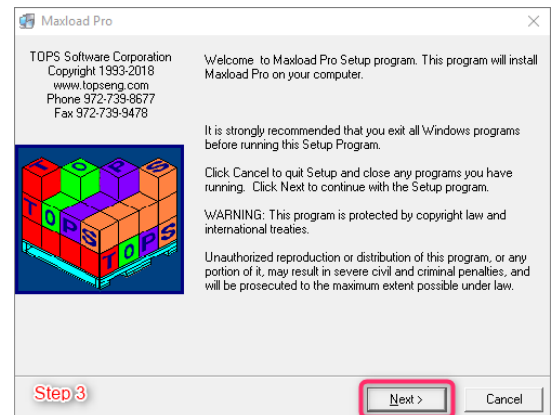
Note: You will then see the **TOPS End User License Agreement (EULA)** which needs to be reviewed and Accepted in order to proceed.

4. At the **Installation** dialog box, select **Install to Server**:

- **Demo License** – to install a trial demo. A temp license with a limited number of executions/days will be provided.
- **Install to Server** – to install a Network license you purchased (as indicated on the CD cover or literature sent). Be sure you start the installation from a client machine as you will point the installation of the software's files to the network location.

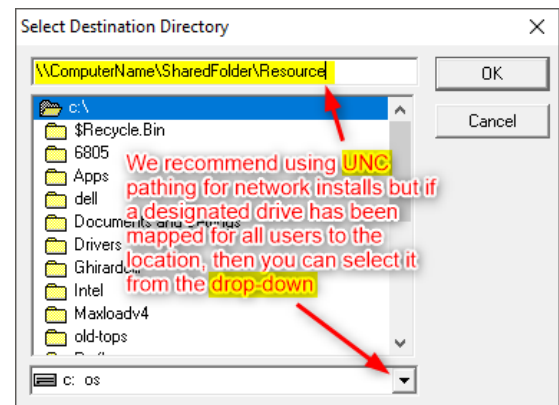
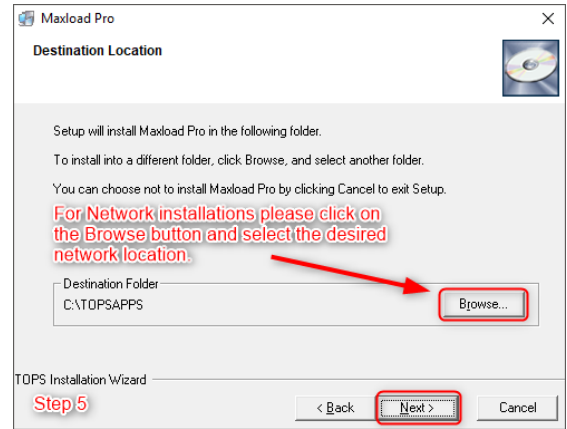
**Install to Local PC** – If you purchased a Stand-Alone license, please refer to the installation instructions for the Stand-Alone version.

**If you are unsure what kind of license you have, please call (972)739-8677 with your serial number in order to confirm.**



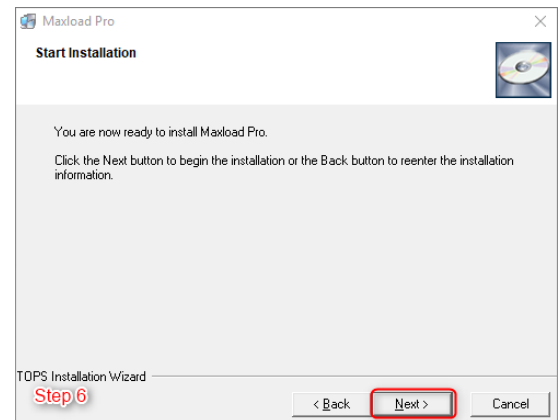
5. **Choose Common Component Location** of where the software will be installed to:

- **Network License** – Click the Browse button to select the desired network location.
- We recommend using a UNC path for the software install but the option of selecting a mapped drive from the drop-down is still available.
- **If you are installing your network license on Citrix or a Terminal Server, please stop the install at this point and contact our tech support for more details and options on installing to these environments.**
- Click **Next** to proceed.



6. **Start Installation** after confirmation of the component location by clicking **Next**.

- From this point on, you will see a series of dialog boxes indicating the progress of installation. When the process is complete, you will see the screen with the message “Maxload Pro has been successfully installed”.
- Click “Finish” to exit the Maxload Pro setup.



## **B. Create and Setup for New Maxload Database**

**Note: If you are upgrading an existing ADO install, please refer to the Section C. of this document.**

1. In SQL Server (using MS SQL Management studio or your preferred tool)
  1. Make sure SQL server security is configured for “SQL Server and Windows Authentication Mode” Create a new database for Maxload called “Maxload”. You can rename the database to a different name later on if desired.
  2. The above operation would create a database called **Maxload**.
2. Run the following scripts (**in this order**) to create SQL user login, database tables, and setup base data (these scripts can be found under the folder: \TOPSAPPS\MaxPro400\adosetup)
  1. Maxload4.0NewCreateLogin.sql
    1. Creates login which Maxload will use to connect to SQL Server
  2. Maxload4.0NewCreateTables.sql
    1. Creates all required database tables, indexes and constraints
  3. Maxload4.0NewDefaultdata.sql
    1. Populates database with required base data
3. Configure **db.ini** (location: \TOPSAPPS\MaxPro400\db.ini)
  1. If you used default naming for database you only need to change the **Server=** .
  2. Otherwise set all the fields as need to match database settings (**Database, user, password**).
  3. **Do not change the following unless instructed by TOPS: Provider, msgdb, and stackmat**

```
[Database]
Provider=sqloledb
Server=<enter the SQLServer name>
Database=maxload
user=maxload
password=tops software
msgdb=sqloledb
stackmat=sqloledb
```

## **C. Upgrading Existing Maxload Database**

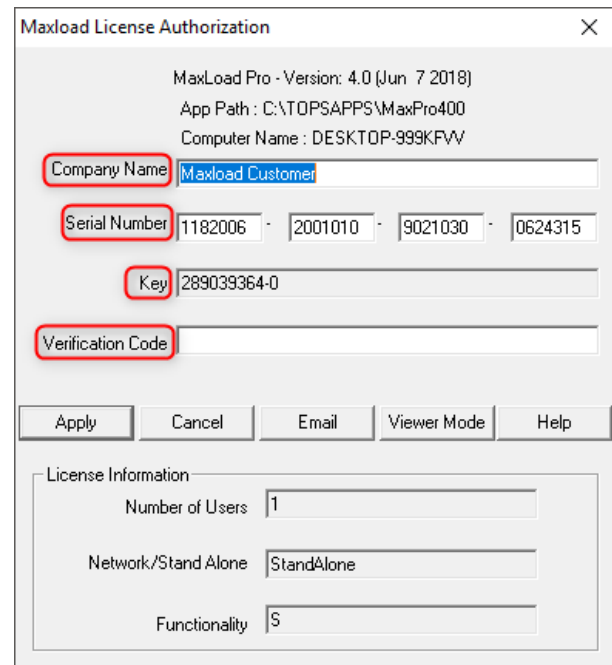
1. Connect to the Maxload database.
2. Backup database (recommended, if database is not regularly backed up)
3. Run the following scripts in this order to update user, tables, and setup base data
  1. Maxload4.0UpgradeCreateSQLScript.sql
  2. Maxload4.0UpgradeUpdateSQLScript.sql
  3. Maxload4.0UpdateDefaults.sql
  4. Maxload4.0UpgradeIndexSQLScript.sql

## D. Starting Maxload and License Setup

Upon completion of the installation, follow the "NET Setup Process" (below) in order to setup the client machines. Note: This can be done before or after the setting of the license.

When you launch the application for the first time you will see the **Maxload License Authorization** dialog box. To set the license, please call **972-739-8677** or email [tech@topseng.com](mailto:tech@topseng.com) and state the nature of your call or email. The following information is required for us to provide a valid Verification Code when you call or email:

- **Company Name** – the company name that you'd like to appear in all reports from Maxload Pro.
- **Serial Number** – the serial number on the CD used for the installation or present in the literature sent with the purchase of your license, NOT the generic serial number in this dialog box.
- The **Key** from the Maxload License Authorization dialog box. This number will be unique to the machine that the install was done to.
- **Verification Code** – this will be provided by us and can only be generated with the aforementioned information given.



Maxload License Authorization

MaxLoad Pro - Version: 4.0 (Jun 7 2018)  
App Path : C:\TOPSAPPS\MaxPro400  
Computer Name : DESKTOP-999KFW

Company Name: Maxload Customer

Serial Number: 1182006 - 2001010 - 9021030 - 0624315

Key: 289039364-0

Verification Code:

Apply Cancel Email Viewer Mode Help

License Information

Number of Users: 1

Network/Stand Alone: StandAlone

Functionality: S

When you receive the Company Name, Serial Number and Verification Code from TOPS, please enter them EXACTLY as provided into the above dialog box. Then click on the "Apply" button. If all information is entered correctly, you should see a message saying "Maxload License successfully Set".

Do note after you have set the license you will get prompted for system **Defaults** which you may select accordingly.

## **E. User Workstation (NET Setup) Process**

All users should have Full Control (read, write, modify and execute rights) access to the TOPSAPPS directory on the network resource and sufficient rights on the workstation you wish to setup the software on.

1. Permanently map a network drive from the client machine to the network share OR use the same UNC path used during installation to get to the location of where Maxload Pro was installed.
2. Browse across the network share to the **\TOPSAPPS\MaxPro400\setup** directory and run **netsetup.exe**
3. This will copy necessary files to the local pc, and install any required redistributables (.dlls, .exes, PDF writer etc). It will create the required shortcut for the software and places it in the **TOPS for Windows Apps** directory.
4. When netsetup completes browse to the 'TOPS for Windows Apps' directory under **Start → All Programs (All Apps in Win10)**. Here launch the "Maxload Pro (Net)" shortcut to access the application.
5. Repeat this process on all TOPS users machines.

**You are now ready to start using the Maxload Pro application!**